



# EDINGLEY LODGE

BARCHESTER HEALTHCARE



## Celebrating Life

[www.barchester.com](http://www.barchester.com)



## A warm welcome

It is our pleasure to welcome you to Edingley Lodge, a Barchester care home situated in Edingley, Nottinghamshire.

Edingley Lodge is located near picturesque villages close to Belvoir Castle and Southwell Minster. Edingley Lodge features one and a half acres of well-kept gardens overlooking stunning countryside where many residents enjoy spending their time.

Our team of qualified and passionate staff focus on the individual needs of each person – delivering support and bespoke nursing, residential and respite care through the use of personalised care plans.

We are proud to provide a delicious selection of seasonal meals and a variety of activities and events.

At Edingley Lodge providing independence and choice for all is very important to us – that's why we encourage residents to be as active and social as they'd like to be and to personalise their room with their own belongings to help them feel at home.

**Nursing care • Residential care • Respite breaks  
En-suite bedrooms • Choice of lounges • Conservatory • Wi-fi  
Landscaped gardens • Larger rooms for couples • Physiotherapy**

# Care tailored to you

Personalised care plans ensure each person in our care has the support they require from a team of experienced and passionate care staff.

At Edingley Lodge we ensure residents are treated with dignity and respect. Our approach to care is based on the use of tailored care plans. These are drawn up with the individuals and their families to identify social, personal and healthcare needs. Each individualised care plan ensures our care is person centred.

## Residential care

The residential care we provide supports older people who might need help with the tasks of daily living, including washing and dressing, but who don't require nursing or specialist care.

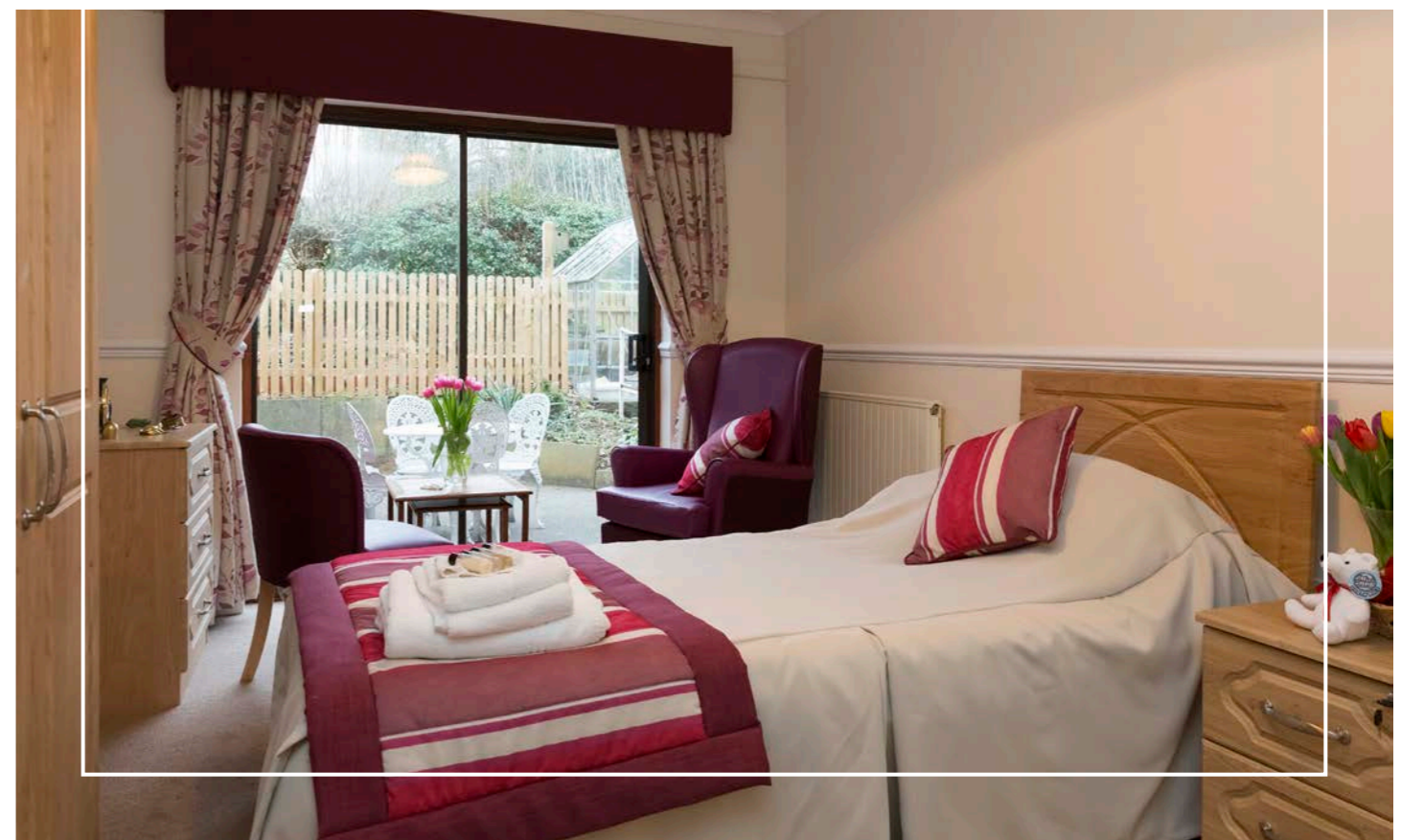
## Nursing care

Our skilled and professional nurses identify your nursing and care needs. A nurse is on duty 24 hours a day to deliver care, and to ensure the quality of care being delivered.

## Respite care and short breaks

A short break or respite care is ideal for those looking for a bit of extra care, either following a hospital stay, illness or if their usual care is not available. It also gives you the opportunity to see what life is like in our home and if it's the right place for you.

Personalised care plans for each resident  
Regular residents' and relatives' meetings  
Call bell system



# Delicious food and life-enriching activities

We place great importance on ensuring variety and choice – from a wide range of life-enriching events, entertainment and activities to delicious seasonal menus.

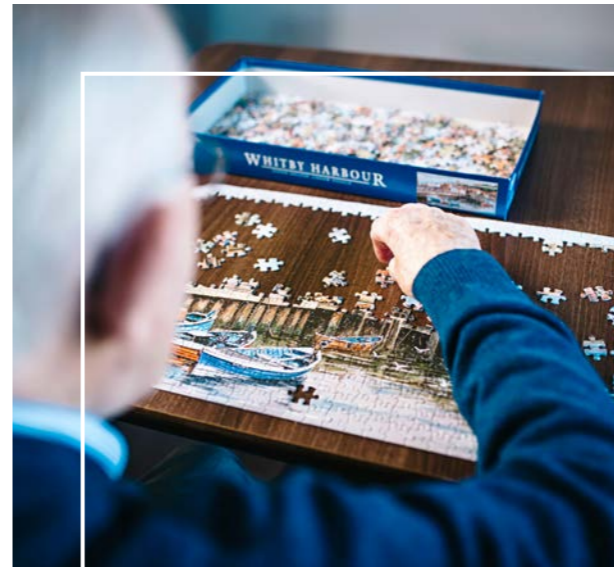
Residents have a choice of nutritionally balanced hot and cold meals three times a day; our dining room is perfect for social mealtimes including visits from loved ones.

Our team of experienced chefs ensure every meal is made from the freshest ingredients, and is not only delicious but reflects personal likes, dislikes and dietary needs through seasonal menus.

We offer an array of stimulating activities every day that are tailored to the interests and abilities of the people we support. Each activity is designed to enhance life skills and give a feeling of purpose and self-worth, encouraging residents to choose whether to continue with existing hobbies or try something new.

Our life-enrichment programme promotes positive well-being and offers regular events, entertainment and excursions out of the home.

**Delicious and nutritious seasonal meals**  
**Tailored activities programme • Hair salon**  
**Outings to places of interest • Vegetable plot**



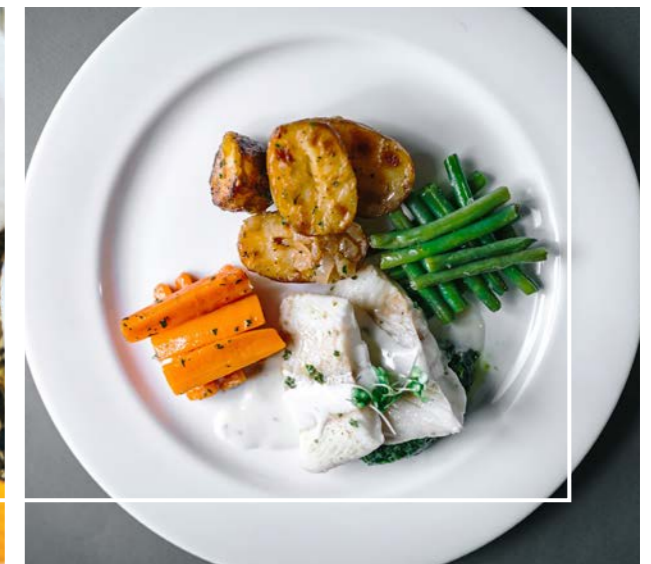
## Paying for life in a Barchester care home

At Barchester, we take great pride in ensuring our residents 'celebrate life'.

We offer care aligned to individual needs, a life-enrichment programme that supports the mental, physical, and spiritual well-being of every resident, and we continually invest in the environments to ensure that our homes are well-appointed and loved.

For details of our costs and payment terms, please visit: [www.barchester.com/EdingleyFees](http://www.barchester.com/EdingleyFees).

Our full terms and conditions can be found on our website: [www.barchester.com/contract](http://www.barchester.com/contract).





**EDINGLEY  
LODGE**

BARCHESTER HEALTHCARE

**Edingley Lodge Care Home**

Station Road, Edingley, NG22 8BX

**01623 882441**

[www.barchester.com](http://www.barchester.com)