

# Apartment 6

South Pavilion, ground floor

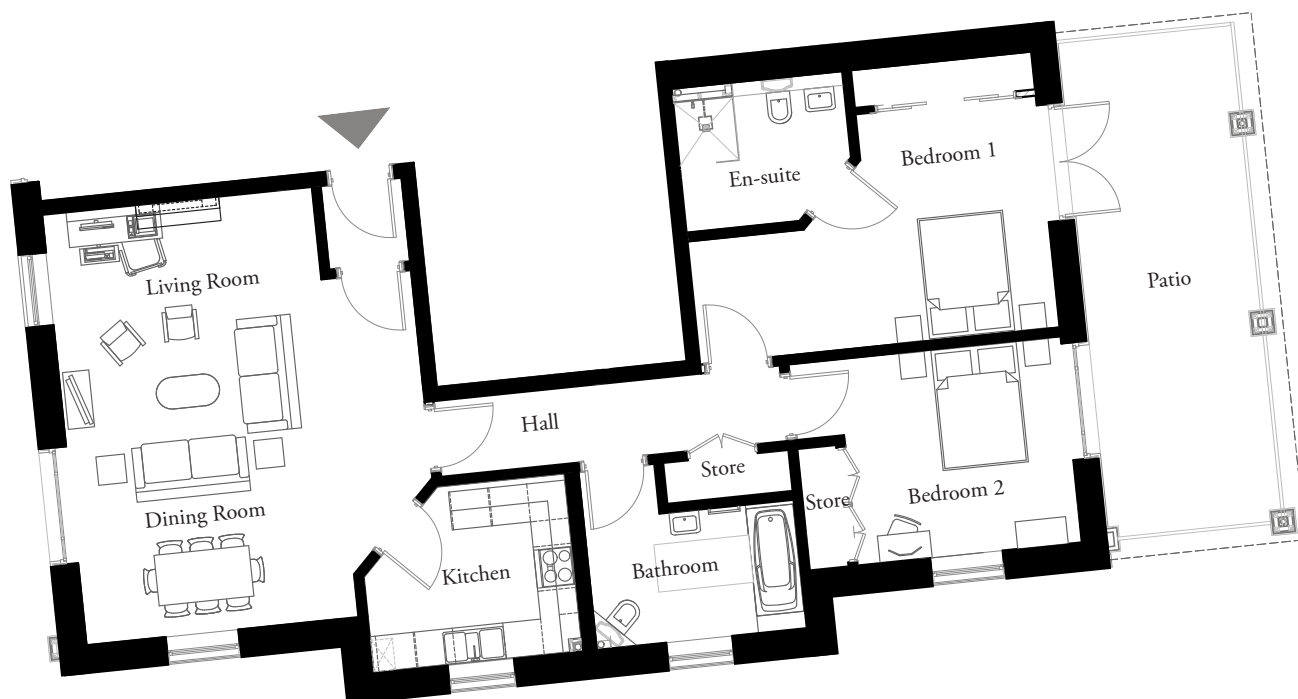


LAKESED PAVILIONS

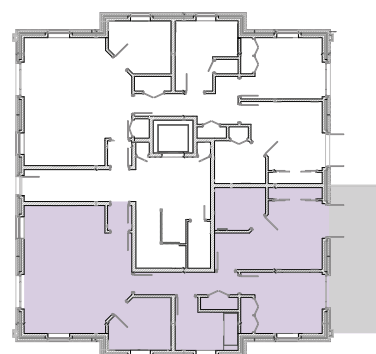
St Peter, Jersey

Located on the ground floor within the South Pavilion this large, triple-aspect two-bedroom apartment has views over the landscaped sweeping entrance and impressive Robert Adam's designed build. Of particular note is the south-facing patio, perfect for alfresco dining which can be accessed from the master bedroom.

Apartment 6 benefits from an en-suite to the main bedroom, house bathroom and kitchen.



South Pavilion, ground floor



# Apartment 6

South Pavilion, ground floor



LAKESIDE PAVILIONS

St Peter, Jersey

## Internal measurements

	Sqm	Metric	Imperial
Living / Dining Room	34.86m <sup>2</sup>	6820 x 4310mm	22'3" x 14'1"
Kitchen	8.55m <sup>2</sup>	3327 x 2825mm	10'9" x 9'2"
Bedroom 1	16.52m <sup>2</sup>	4569 x 3672mm	14'9" x 12'0"
Bedroom 2	12.51m <sup>2</sup>	3555 x 3265mm	11'6" x 10'7"
Bathroom	7.72m <sup>2</sup>	3327 x 2825mm	10'9" x 9'2"

## Service charge

The Lakeside Pavilions £200 a month service charge includes:

- 24-hour emergency assistance
- Access to housekeeping and maintenance assistance (this would be then charged at an hourly rate)
- Communal transport both around the site and to activities
- 10% discount card to be used for all food in any of the Barchester restaurants
- A daily check service from the care home staff



All layouts/dimensions are for illustrative purposes only.  
Bedrooms sizes do not include wardrobe space.